

**Pressure Rating:**  
**600 psi (40 bar), SCH 40s**  
**(or thicker), cut grooves<sup>1</sup>.**

For pressure ratings for other pipe schedules and groove types, please refer to the table below or consult with Piedmont

### Description

- Housing - Solid 316 stainless steel, Grade CF8M (UNS # J92900), conform to ASTM A351/A351M

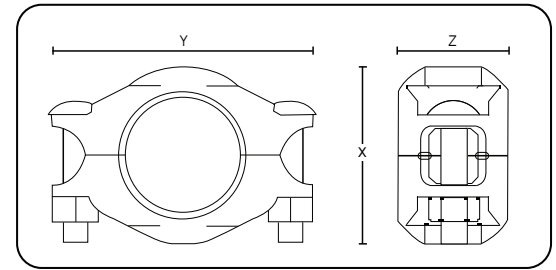
- Gaskets - EPDM rubber, suitable for hot and cold water services. Two shapes of gaskets available: C-shaped or Flush-fit. NSF/ANSI 61 approved or equivalent for drinking water system components. *Not suitable for petroleum service.*

- Bolts / nuts - Round-head, square-neck, 316 stainless steel bolts and heavy hex nuts conform to ASME B18.5 and B18.2, respectively.

### Note

*For the use of Piedmont's couplings on cyclic axial displacement systems, please consult with Piedmont for design and installation guidance.*

<sup>1</sup>Working pressures have been determined based on generally accepted standard specification for performance of gasketed mechanical couplings, in accordance with ASTM F1476. For use on pipes thinner than schedule 40s and for rolled grooves, please consult with Piedmont. Pipe's schedule and material must comply with the requirements of ASME B31.1.



Style B Specifications					
Nominal size inch	Dimensions			Approx. Weight lb (kg)	Working pressure* psi (bar)
	X	Y	Z		
3/4	1.91 (48.5)	3.04 (77.2)	1.68 (42.7)	0.81 (0.37)	600 (40)
1	2.29 (58.2)	3.42 (86.8)	1.68 (42.7)	0.95 (0.43)	600 (40)
1-1/4	2.50 (63.5)	3.65 (92.7)	1.71 (43.4)	1.09 (0.49)	600 (40)
1-1/2	2.76 (70.1)	4.06 (103.1)	1.71 (43.4)	1.18 (0.54)	600 (40)
2	3.24 (82.3)	4.38 (111.3)	1.85 (47.0)	1.38 (0.63)	600 (40)
2-1/2	3.74 (95.0)	5.30 (134.6)	1.85 (47.0)	2.05 (0.93)	600 (40)
3	4.36 (110.7)	5.88 (149.3)	1.85 (47.0)	2.40 (1.09)	600 (40)
4	5.70 (144.8)	7.60 (193.0)	2.02 (51.3)	4.23 (1.92)	600 (40)
6	8.18 (207.8)	10.25 (260.4)	2.02 (51.3)	9.12 (4.14)	600 (40)

\*For schedule 40s cut-groove pipes

